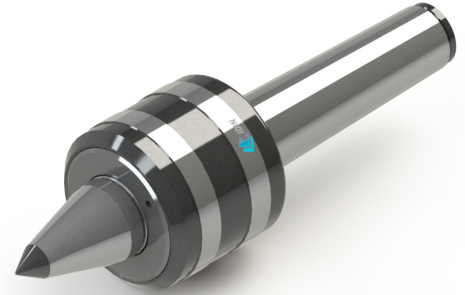
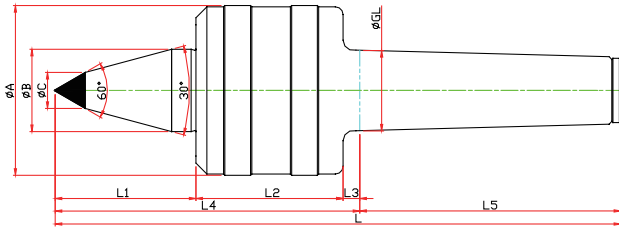


# NKBC-TYPE

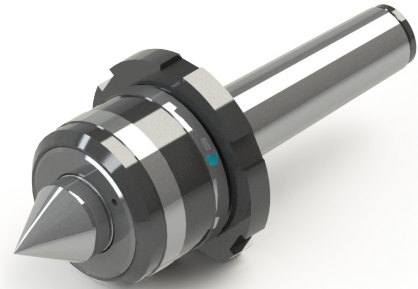
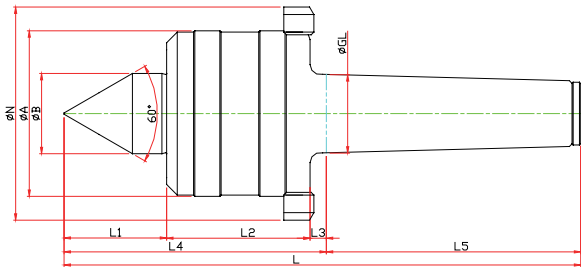
※ SHAFT 확장(바이트 간섭 최소화) SHAFT EXTENSION(Minimize the bite-interference)  
 ※ 초경타입 Carbide Type



Model	Order Number	Morse Taper	Dimension										Weight MAX.	R.P.M MAX.	Run Out
			GL	A	B	L1	L2	L3	L4	L5	C	L			
LC-3NKBC	021103	NO.3	23,825	52	22	48	42	5	95	80	10	175	980	5000	0,003
LC-4NKBC	021104	NO.4	31,267	66	32	53	57	6.5	116.5	101.5	14	218	1400	3800	0,003
LC-5NKBC	021105	NO.5	44,399	80	40	65.5	57	6.5	129	129.5	18	258.5	1900	3400	0,005
LC-6NKBC	021106	NO.6	63,348	132	65	78	100	8	186	182	25	368	5100	1800	0,005

# NKN-TYPE

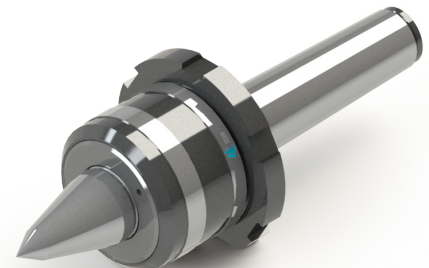
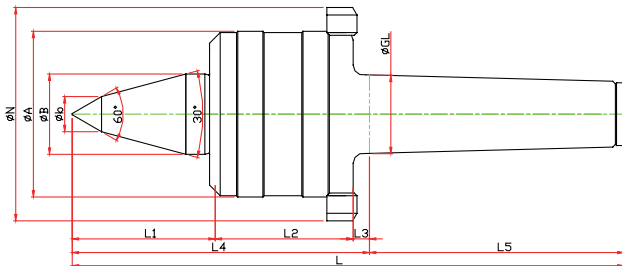
※ 너트, 초경타입 Carbide, Nut Type



Model	Order Number	Morse Taper	Dimension										Weight MAX.	R.P.M MAX.	Run Out
			GL	A	B	L1	L2	L3	L4	L5	N	L			
LC-3NKN	020013	NO.3	23,825	52	22	29	42	5	76	80	70	156	1900	5000	0,003
LC-4NKN	020014	NO.4	31,267	66	32	37	57	6.5	100.5	101.5	85	202	2700	3800	0,003
LC-5NKN	020015	NO.5	44,399	80	40	45.5	57	6.5	109	129.5	98	238.5	3200	3400	0,005
LC-6NKN	020016	NO.6	63,348	132	65	65	100	8	173	182	165	355	10000	1800	0,005
LC-7NKN	020017	NO.7	83,058	168	72	84	128	10	222	250	210	427	17200	1200	0,005

# NKBN-TYPE

※ SHAFT 확장(바이트 간섭 최소화) SHAFT EXTENSION(Minimize the bite-interference)  
 ※ 너트 타입 Nut Type



Model	Order Number	Morse Taper	Dimension										Weight MAX.	R.P.M MAX.	Run Out	
			GL	A	B	b	L1	L2	L3	L4	L5	N				L
LC-3NKBN	021013	NO.3	23,825	52	22	10	48	42	5	95	80	70	175	980	5000	0,003
LC-4NKBN	021014	NO.4	31,267	66	32	14	53	57	6.5	116.5	101.5	85	218	1400	3800	0,003
LC-5NKBN	021015	NO.5	44,399	80	40	18	65.5	57	6.5	129	129.5	98	258.5	1900	3400	0,005
LC-6NKBN	021016	NO.6	63,348	132	65	25	78	100	8	186	182	165	368	5100	1800	0,005